

SCHULTE®

SDX-102 · SDX-840 Snow Blowers



SDX-102 shown with FM-300 Front Mount 3pt Frame

SDX-102 SDX-840

- 1** The SDX-102 features a 102" wide cut and efficient twin stage design, ideally suited to 85-140 HP tractors.
- 2** The SDX-840 features a 84" wide cut and efficient twin stage design, ideally suited to 55-85 HP tractors.
- 3** Highly efficient 30" four paddle fan on the SDX-102 and 26" four paddle fan on the SDX-840, with an open center and cupped blades results in improved throwing distance.
- 4** Heavily reinforced auger feeds snow to the fan and ensures that chunks of ice & hard packed snow are broken up before being discharged.
- 5** A replaceable cutting blade and replaceable adjustable skid shoes are standard on all models.
- 6** A heavy duty gearbox with 1 5/8" splined shafts provides positive power delivery to the fan.
- 7** A 300 degree rotating chute design includes a UHMW bearing area to reduce freeze up of the chute.
- 8** Shear bolt protection for the fan and cross auger.
- 9** The SDX-102 incorporates a fully enclosed chaincase for longer chain life.

WORLD CLASS - BUILT TO LAST

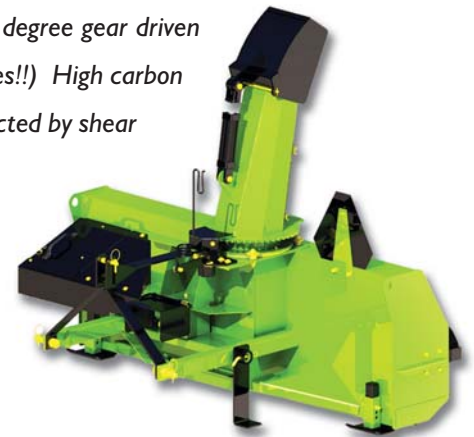
SDX-102 / SDX-840



The **SCHULTE SDX-102 AND SDX-840** snow blowers are the perfect tool for all your snow blowing needs such as, yard clearing, clearing around bins, blowing beside grain bags, used by cities and municipalities because of the tough build, used for truck loading, clearing acreage lanes, contractors use them for clearing ditches and oil roads, etc.

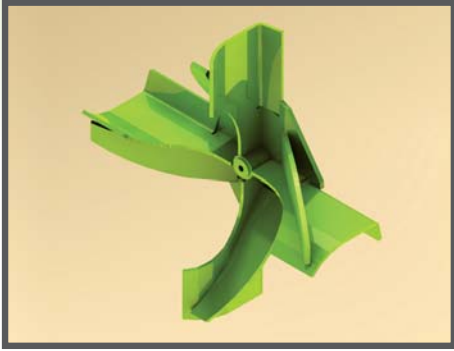


The **SCHULTE SDX-102 AND SDX-840** snow blowers include a heavy duty 300 degree gear driven chute rotation mechanism that is operated by a 7.3 cubic inch hydraulic motor. (No more cables!!) High carbon steel is used in both the cutting edge and adjustable skid shoes. Fan and feeding auger are protected by shear bolts. The fan shaft is a heat treated 1-5/8" splined shaft. Heavy duty shafts with shear pin protection are a standard option on all models for heavy duty use. A standard Category 2 three point hitch or Category 2 quick hitch can be used to attach to the blowers. Deflector design reduces blowback and hinge is maintenance free. Full one year warranty on materials and workmanship.



Quality • Service

Features



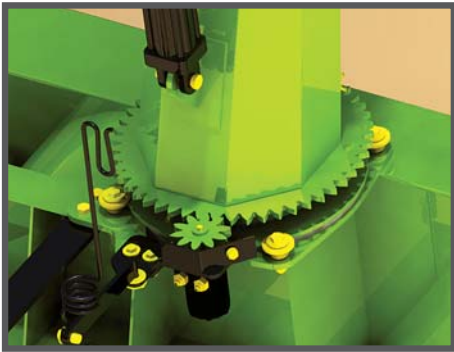
The heart of these Snow Blowers is the 4 paddle open center, cupped blade fan design that concentrates snow to the center & back of the fan resulting in improved performance.



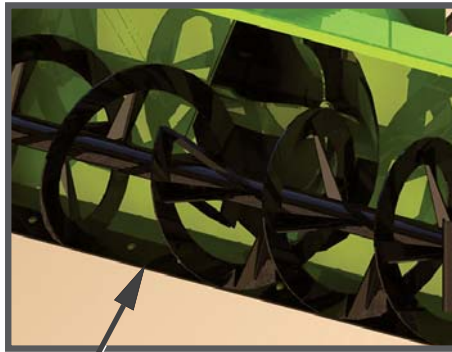
Open auger design with formed struts. The SDX-102 uses a 23" auger. SDX-840 uses a 18" auger. This type of design cuts into hard packed snow & feeds the fan with ease.



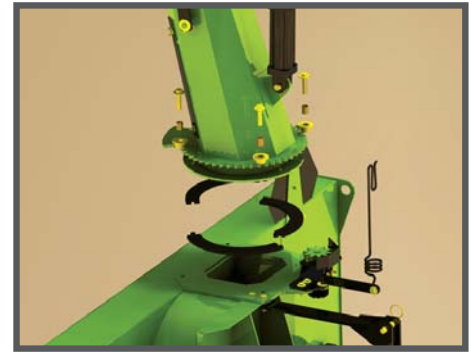
The double chute deflector reduces blow back of snow. Only available on the SDX-102.



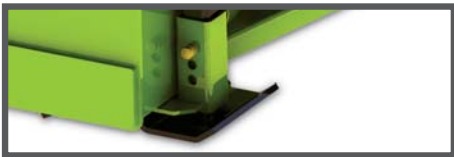
A gear driven 300 degree hydraulic chute rotor comes standard with a 7.3 cubic inch hydraulic motor.



High grade steel replaceable cutting blade is standard and gives many years of trouble free cutting.



A high molecular UHMW bearing area keeps freeze ups to a minimum in the coldest weather conditions.

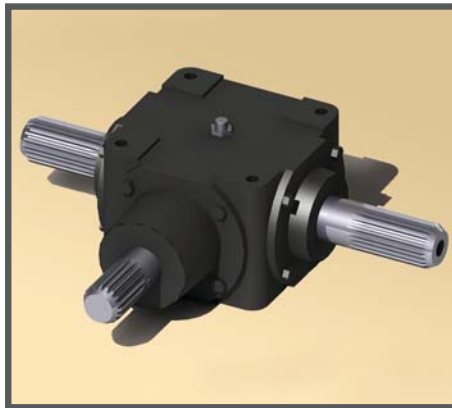


SDX-840 Skid Shoes

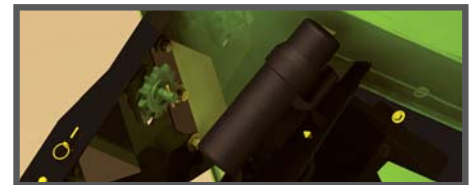


SDX-102 Skid Shoes

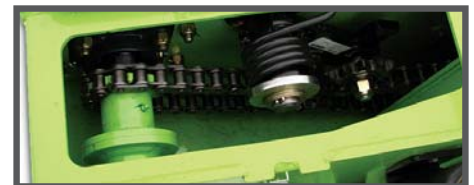
Adjustable replaceable skid shoes are standard. Gauge wheels with tapered roller bearings are optional for use on pavement or cement.



1 5/8" splined and heat treated fan shaft is standard on the SDX-102 and SDX-840. A 1 5/8" splined hub welded into the fan ensures maximum strength over competitive keyed designs.



The SDX-840 idler sprocket maintains constant tension on the auger drive chain and reduces possible freeze ups.



The SDX-102 features an enclosed chain case with spring tension tightener.

Value • Trust

SDX Series Specifications

SPECIFICATIONS

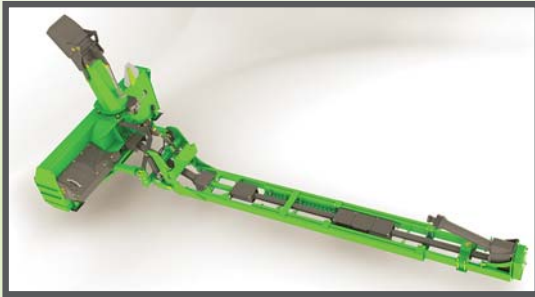
	SDX-102	SDX-840
Cutting Width	102" (2.59m)	84" (2.14m)
Tractor Horsepower	85 - 140 HP (63 - 104KW)	55 - 85 HP (41 - 63KW)
Cutting Height	35" (889mm)	30" (762mm)
Overall Height	96" (2.44m)	78" (1.98m)
Auger Diameter	23" (584mm)	18" (457mm)
Fan Diameter	30" (762mm)	26" (660mm)
Fan Type	4 paddle	4 paddle
Fan Shaft Diameter	1 5/8" (41mm)	1 5/8" (41mm)
Auger Drive Chain	#80	#60
Weight	1675lbs (760kg)	1000lbs (373kg)
Adjust. Double Linked Chute Deflector	Standard	N/A
Hydraulic Chute Rotation Mechanism	Standard	Standard
Replaceable Blade	Standard	Standard
Adjustable Replaceable Skid Shoes	Standard	Standard
Hitch Size	Cat II, Cat II quick hitch	Cat II, Cat II quick hitch
PTO Speed	540 RPM	540 RPM
Capacity - Dry snow / Wet Snow	388tons/hr / 1222tons/hr	258tons/hr / 810tons/hr

SDX-102 OPTIONS

1. Heavy duty power shaft - size 8
2. Heavy duty chute kit with cylinder kit
3. Truck loading chute kit with cylinder kit
4. 3pt extension kit
5. Gauge wheel kit

SDX-840 OPTIONS

1. Hydraulic cylinder kit, with hoses for chute deflector
2. Gauge wheels
3. Heavy duty power shaft - size 6
4. 3pt extension kit
5. Manual chute deflector bar



A perfect combination for Schulte's model SDX-102 is the FM-300 front mount 3pt hitch frame.

SPECIFICATIONS

	FM-300
Tractor horsepower, maximum	250 HP
Tractor PTO (1000 rpm preferred)	1000 RPM for SDX-117, RDX-102 & SDX-102 540 RPM for SDX-840 and RDX-102
Lift capacity	5000 lbs
Adjustability	Accommodates tractors between 151" and 211" measured from front mount plate to drawbar pin
Average ground clearance	13" depending on tractor installation
Average lift range	18"
Weight	1650 lbs

SCHULTE



Schulte Industries Ltd.

P.O. Box 70, Englefeld, Saskatchewan, Canada S0K 1N0

Tel: (306) 287-3715 Fax: (306) 287-3355

E-Mail: info@schulte.ca

Visit our Web site at: www.schulte.ca

Schulte is a registered trademark of Alamo Group Inc.

Schulte Industries Ltd. reserves the right to change the design, specification of its products without notice. Illustrations may include optional equipment and accessories, and may not include all standard equipment.



Sold By: _____

PRINTED IN CANADA

PREPARED by NELSON GRAPHIC DESIGN

201312